

2021-2022

# COMPANY PROFILE

رؤية  
VISION  
2030  
المملكة العربية السعودية  
KINGDOM OF SAUDI ARABIA

**C**  **NEX**  
SPECIALIZED CONTRACTING



# PRESIDENT MESSAGE

The development boom that Kingdom of Saudi Arabia is experiencing nowadays in various sectors and projects, whether industrial, commercial, or real estate, governmental or private, has become a major source of national income, and plays an important role in the growth of the national economy and improving the living standards for members of society. Contracting and specialized services companies play an important role for the success of these projects and for efficient operation that ensures the stability and growth of the income to match with 2030 Vision.

We in **CONEX** acknowledge the importance of these projects and commit towards its success and always strive to maintain our position at the forefront of these companies and keep pace with the fast pace that the Kingdom's 2030 Vision is heading towards, away from traditional sources of income.

In **CONEX**, over more than 20 years, our work was not limited only to participation in construction or industrial projects through its various stages of planning, designing and execution, but our relationship with the facilities and clients extends beyond that by providing maintenance services and continuous technical support using the best technology and high-quality materials that guarantees our customers' satisfaction and achieves the highest levels of quality and efficiency. We always strive to provide the best level of services and technical support, and for that, we spare no effort in attracting national and non-national engineers and highly qualified work teams, and we are always working to increase and develop equipment and business technology to ensure that the confidence and appreciation of our customers are preserved.

Mr. Saad Al-Qarni  
**CONEX CEO**





# WHO WE ARE

Construction Excellence Co. (**CONEX**) was established the year 1999 as a 100% Saudi national, medium sized establishment, worked on several construction projects along with trading services as well. By 2008 **CONEX** started to pay more attention on concrete and steel structures protective coatings and waterproofing.

Now with more than 20 years in this field **CONEX** is considered one of the leading specialized contracting companies in Saudi Arabia. With more than 400 employees, **CONEX** activities are widely spread across the region in both governmental and private sector projects. **CONEX** now is considered one of the leading providers of high-quality specialized construction service in KSA.

**CONEX** is continuously attracting field pioneers to improve and maintain ongoing success with three main branches to cover all Saudi Arabia regions at Al-Khobar (head office), Jeddah & Riyadh. **CONEX** have built a strong list of served clients include Saudi Aramco, SABIC, SASREF, SWCC, (NWC) National Water Company, (RC) Royal Commission, SEC, and many other known organizations.

**CONEX** is planning to expand the business within gulf countries with more regional offices in Bahrain, Kuwait & Oman.

# WHAT WE STAND FOR

**CONEX** passionately believes that what we aspire to, how we operate and the way in which we behave has clear implications for our business performance and our success.

Realizing our vision, achieving our mission and delivering our values are the continuous goals of everyone who works at our company.

## MISSION

Our mission is to assure delivery of our client's projects' on time with the maximum professionalism and the finest quality.

## VISION

Our Vision is to be the most preferred and trusted provider of special contracting services in Saudi Arabia.

## VALUES

### Commitment

Our commitment with the clients is the code that maintain our position to the top.

### Openness

We believe that transparency is essential, in every aspect of our business. Also, we are open to new ideas and new cultures.

### Nurturing

We keep nurturing our clients to maximize their satisfaction and loyalty.

### Excellence

We continuously strive to exceed expectations as a habit to achieve the best possible results.

### X to irresponsibility

We keep our environment with positive energy. No room for any unethical or irresponsible behaviours.





# OUR SERVICES

## INDUSTRIAL FLOORING



- Skid-Resistant Flooring
- Vehicular Traffic Systems
- Cementitious/Epoxy Self-Levelling
- Heavy-Duty Polyurethane Systems
- Epoxy Screed
- Antistatic Flooring

## PROTECTIVE COATING



- Concrete and Steel Protection
- Chemicals Resistant Coatings
- Polyurea Technology
- Anti-Chloride & Carbonation Coatings
- Spray-applied PU Foam

## WATERPROOFING



- Bitumen, TPO, PVC, EBDM, HDPE
- Liquid applied membranes
- Cementitious waterproofing

## CONCRETE REPAIR



- Cracks Repair & Injection
- Grouting & Anchoring
- Structural Reinforcement
- Floor Levelling & Topping
- Cathodic Protection

## FIREPROOFING COATINGS



- Intumescent
- Cementitious

## DECORATIVE FLOORING



- Epoxy Terrazzo
- Microcement Floorings



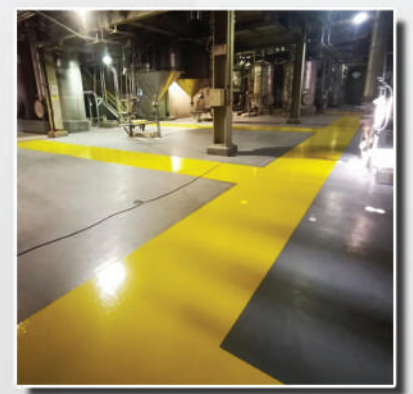


# INDUSTRIAL & DECORATIVE FLOORING

CONEX offers a high-quality wide range of services for the scope of industrial flooring systems. CONEX is considered a market leader in this scope with an experinced manpower and a long list of completed projects with known clients. On the other hand, epoxy terrazzo flooring systems started to spread as a luxurious flooring option for some clients who are looking for decorative flooring with customized colouring and special designs. Again, CONEX was one of the first companies to introduce this system to the top clients in Saudi Arabia.

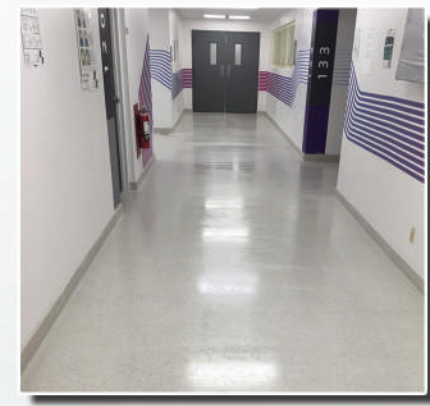
Industrial Flooring services include the following::

- Skid-Resistant Flooring.
- Vehicular Traffic Systems.
- Self-Levelling Flooring.
- Heavy-Duty PU Systems.
- Epoxy Screed.
- Antistatic Flooring.



## Epoxy Terrazzo

Saudi Aramco Head Office  
Dhahran , Saudi Arabia



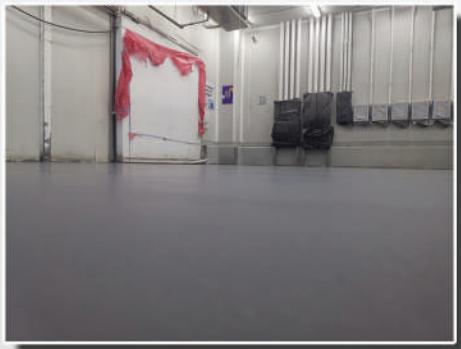
## Heavy-duty PU flooring

Almarai factory  
Riyadh, Saudi Arabia



## Epoxy Self-Levelling

Shuqaiq Steam Power Plant  
Shuqaiq, Saudi Arabia



## Heavy-duty PU flooring

Aquat factory (AlBaik)  
Jeddah, Saudi Arabia



وزارة الرياضة  
Ministry of Sport

## Epoxy Flooring

Prince Abdullah Al-Faisal Stadium  
Jeddah, Saudi Arabia







# CONCRETE REPAIR & WATER PROOFING

Concrete should be built to last. Any damage, leakage or cracks to the concrete surface will affect the structure life and may cause an unstable situation for the citizens or humanity around it. In CONEX, we make sure that the concrete is tough and durable enough to ensure that the environment is safe. CONEX uses high quality materials from construction chemicals market leaders to meet the maximum quality standards to secure the highest results during testing. Concrete repairing includes:

- Concrete injection.
- Anchoring
- Cathodic Protection.
- Grouting.
- Structural Reinforcement

CONEX also has a well experienced team to apply various kinds of waterproofing systems including : liquid applied membranes, TPO, PVC, EBDM, HDPE & Cementitious Waterproofing.



Concrete Repair



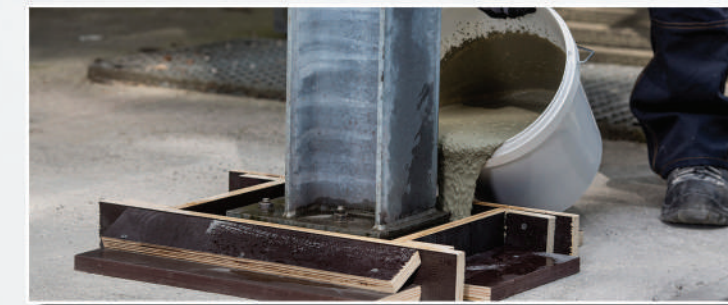
Concrete Injection



Grit Blasting



Structural Reinforcement



Grouting



Waterproofing Membrane Application (PVC - TPO - HDPE)





# & PROTECTIVE FIREPROOFING COATING

Protective coatings are the main guard of any concrete or steel structures that work as the first defence line for the substrate against corrosion, water, chemicals, and any environment causes that may reduce the structure service life. Conex has the best experienced teams to serve its clients for protective coatings services. Types of protective coatings services include:

- Concrete and Steel Protection.
- Chemicals Resistant Coatings.
- Anti-Chloride & Carbonation.
- Polyurea Technology.
- Spray-applied PU Foam.

Also, with the robust development of construction technologies and the need to accelerate the construction duration with higher flexibility to architects' designs, Steel structures were selected to be a better option. Almost all world's tallest skyscrapers are framed with steel and thus the need of fireproofing protecting become a must to provide additional time for emergency response and safe evacuation for the structure. CONEX recently has developed a special team for fireproofing protection to cover the scope for cementitious and intumescent paints.



Spray Polyurethane  
Foam Roofing



Intumescent paint application



Protective Coating



**Petro Rabigh**  
Rabigh, Saudi Arabia  
Concrete repair & Polyurea



# HSE

HEALTH & SAFETY ENVIROMENT



CONEX is committed to provide and maintain a safe and healthy workplace for all staff, reducing any impact our operation might have on the environment, and to provide the information, training and supervision to all staff and contractors needed to achieve this. CONEX takes responsibility for HSE procedures, and employees are aware of their responsibilities to comply with the company HSE policies and procedures. Each employee is encouraged to play a vital and responsible role in maintaining a safe and healthy workplace and caring for our environment through:

- Be involved in the workplace HSE system.
- Sticking to correct procedures and equipment use.
- Reporting any pain or discomfort as soon as possible.
- Helping new employees, trainees and visitors to the workplace understand the right procedures and why they exist.
- Keeping the workplace tidy to minimise the risk of any accidents.

# QMS

QUALITY MANAGEMENT SYSTEM

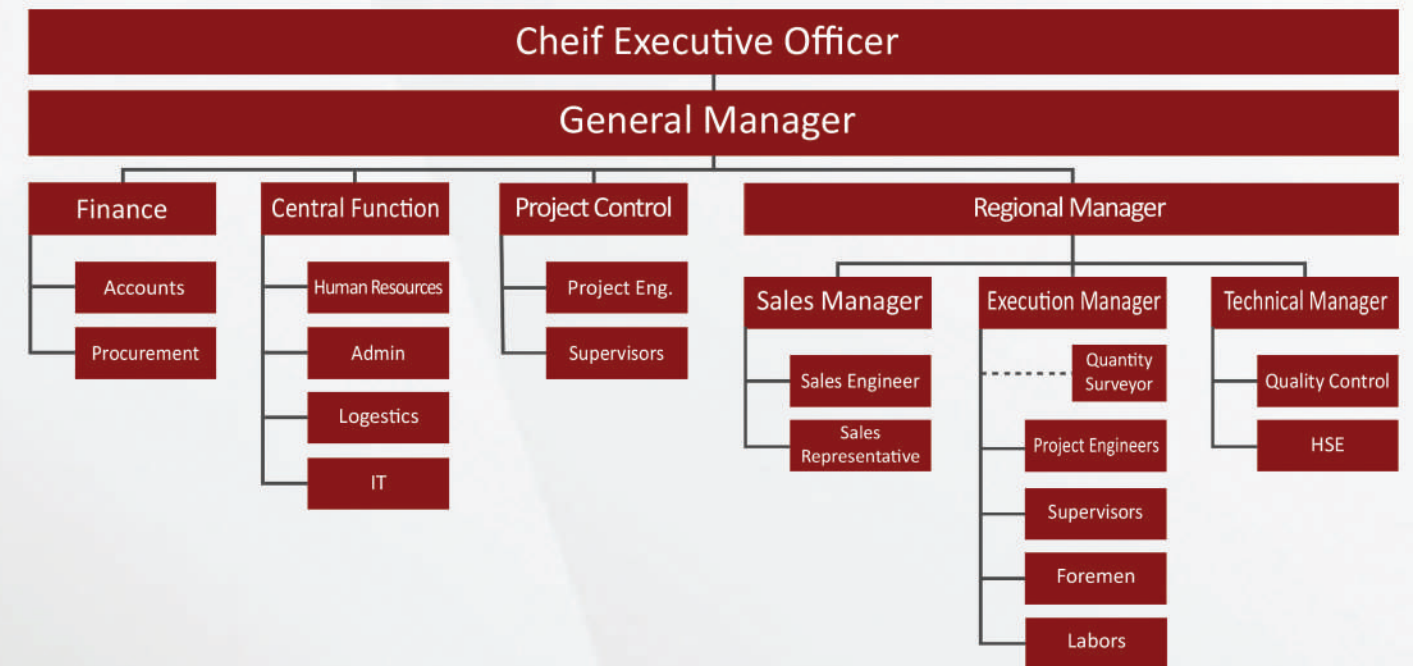


Our Quality Policy is defined and strongly driven by the following management principles and behaviours:

- Build a mutually profitable relationship with our customers, ensuring their long-term success, through the understanding of their needs and the needs of their customers as well.
- Achieve our commitments for quality, cost, and schedule.
- Enhance the systematic research and use of best preventive practices at all levels and ensure reliable risk management.
- Drive continual improvement and innovation based upon efficient business processes, well-defined measurements, best practices, and customer surveys.
- Develop staff competencies, creativity, empowerment and accountability through appropriate development programs and show strong management involvement and commitment.



# ORGANIZATIONAL CHART



CONEX has over 300 employees including engineers, supervisors and labours with high technical team of Saudi engineers and admins. We are aiming to achieve the target Saudization percentage that matches with Saudi Arabia's 2030 Vision.





# Vendor Registration

Organization
Saudi Aramco
SABIC
The Red Sea Development Co. "TRSDC"
NEOM
Saudi Electricity Co.
Saline Water Conversion Corp. "SWCC"
SAR (Saudi Railway Company)
Saudi Airlines Catering
SASREF
Royal Commission
Marafiq
Public Investment Fund "PIF"
National Water Co. (NWC)
Yanbu Aramco Sinopec Ref. Co. "YASREF"



المؤسسة العامة لتحلية المياه المالحة  
Saline Water Conversion Corporation



ياسرف  
Yasref



نيوم  
NEOM



NWC  
المياه الوطنية



## Our Partners

We cannot succeed without continuous support from our partners. Since beginning, CONEX has maintained strong partnership with the construction chemicals market's leaders.

CONEX is always open to start cooperation and share the success with new partners or suppliers to explore extra experience and achieve a win-win situation.



AkzoNobel



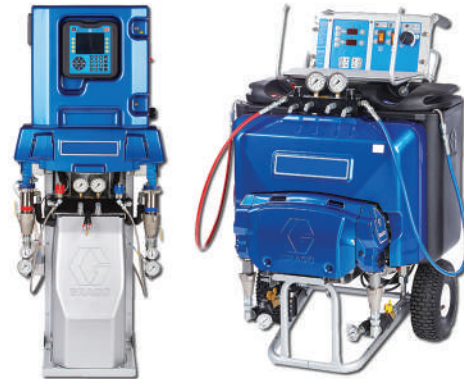


# OUR EQUIPMENT

CONEX has a huge fleet of equipment which makes us always prepared to take over any type of application or project at any size and assure the required quality. We are continuously investing in the most updated technologies to keep us ahead of the market.

Our equipment includes:

1. Grinding machines.
2. Floor Shot Blasting machines.
3. Floor Scarifier.
4. Dust Extractors and Vacuums.
5. Airless Spray machines.
6. Sand Blasting machines.
7. Polyurea and PU Foam Spraying machines.
8. Injection machines.
9. Cementitious Pumps and Shotcrete.
10. Drum Mixers.
11. Demolishing Hammers.
12. Compressors, Saws & Generators.



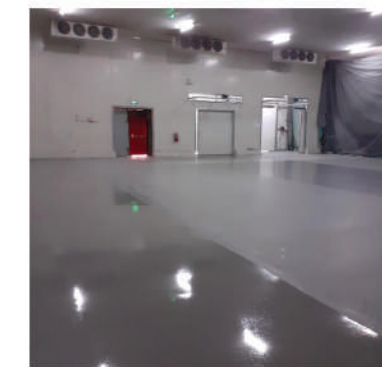
## AL WATANIA POULTRY QASSIM FACTORY

Completed 

Contract Value: **SAR 6,540,000**



Al Wataniya Poultry has invited CONEX with other companies to bid for the new meet factory in Al Qassim. The required system was heavy-duty polyurethane screed from Basf (Ucrete). After reviewing the technical and financial submission from all bidders, Al Watania awarded the project to CONEX with total contract value of SR 6,540,000. CONEX is considering this project as one of the main milestones in job reference list as the client was totally satisfied and the project was completed within the planned duration and with very high quality on one of the top client's facilities in Saudi Arabia.

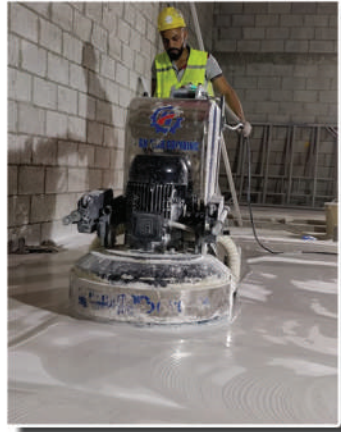


**BASF**  
The Chemical Company

**MASTER BUILDERS**  
SOLUTIONS



# RIYADH METRO



Riyadh Metro project represents a public transit system of 6 main lines covering 176 KM and 85 highly equipped stations with cutting-edge technology, which will offer Saudi Arabian citizens an outstanding experience during their trips around the city.

These 6 lines cover most of the highly populated districts, government's facilities, educational and commercial outlets. It is connected with King Khaled International Airport and King Abdullah Financial District, in addition to big universities, the city centre and centre of Public Transit.

Since day one of the project, CONEX started the journey to be part of the project offering its services to the project main allies ANM Metro & FAST Consortium. This journey was succeeded with 3 contracts for *Park & Ride and Trains Stabling Area* with total area of 175,000 square meters covering various types of extreme-quality services with strong cooperation with construction chemicals market leaders.

CONEX is looking forward to winning more contracts in Riyadh Metro to expand its success story of this mega project.



ANM METRO | ArRiyadh New Mobility

Ongoing

FAST Consortium

Contracts Value: **SAR 19,800,000**

	Type of service	Area (m <sup>2</sup> )
ANM Metro	Epoxy Terrazzo	15,000
	Vehicular Traffic System	50,000
	Concrete Screed works	30,000
FAST Consortium Trains Stabling Area	Epoxy Flooring System	30,000
	Anti-Carbonation Paints	50,000



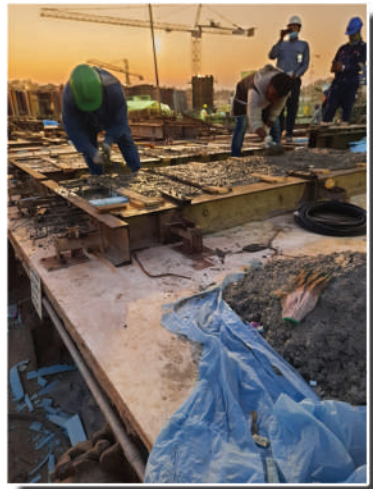




# SAUDI ARAMCO SHELL REFINERY CO.



In order to expand, we have to explore new areas of experience and try to benefit from it. On 2019, CONEX introduced its industrial services to Saudi Aramco Shell Refinery Co. (SASREF) to be one of the main players on the running shutdown for renovation and repair works. Through our partner ATTS, CONEX win one of the major contracts with value of SAR 41,650,000 to prove that we are big and on the top list of market leaders. With high experienced team and 24/7 working hours, CONEX started the project to align with the tight project schedule and high specifications of Civil and MEP scope of work. CONEX has been appreciated by SASREF for completing the first stage of project without LTI.



# AOS & PRIMARY COOLING WATER BASINS

Ongoing

Contract Value: SAR 41,650,000

The project scope of work included the following:

- Concrete repair.
- Cathodic protection.
- Concrete strengthening using Carbon Fibers.
- Protective Coating & GRP lining
- Oil Skimmers System.



Our Partners on the project :

Construction Chemicals & Carbor Fibers



Rotary Skimmers



Cathodic Protection



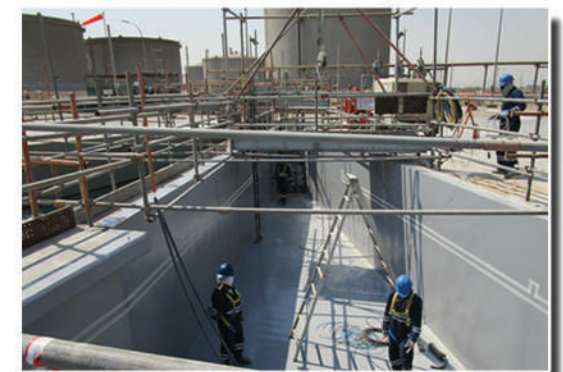
Precast Concrete



Scaffolding



3rd Party for Testing





# JAZAN ECONOMIC CITY

## NORTH & SOUTH TANK FARMS

Completed 

Contracts Value: **SAR 40,200,000**



CONEX has completed one of the most successful milestones at Jazan Economic City project, packages # 4 & 5. Main contractor was Consolidated Contractors Co. "CCC" and CONEX showed a high quality performance through the project duration with the maximum excellence that exceeded the client satisfaction. Scope of work included the following:



- Protective Coating for Dike Wall, Foundations and Sleepers.
- Internal Preservation for Crude Oil Tanks Using Fogging Technology.
- Protective Coating for Concrete Foundations Ring Beams.
- External Waterproofing System Around the Perimeter of 50 Tanks.



# INFRASTRUCTURE & PORT (JECPI)

Ongoing 

Contracts Value: **SAR 6,000,000**



Al-Kifah Contracting Co. has been awarded the main package of Jazan Economic City Infrastructure & Port (JECPI) and CONEX planned to add its fingerprint on this project using the long experience and professionalism of its staff. The total service area exceeded 40,000 square meters through various types of flooring systems:



- Adjusting level by mechanical grinding, chipping for concrete floor and applying epoxy screed.
- Anti-Static resinous flooring System.
- Epoxy Anti-Slip flooring system.
- 4000- & 9000-microns heavy duty polyurethane flooring system for the fresh & cold zones.
- Epoxy Anti-Slip with polyurethane topcoat flooring system for the exposed areas.
- Protective Coating systems for :
  - Fire Chamber and Portable Water Chambers.
  - Storm Chamber and Lift Station.
  - Leaking Container Area.





# OUR CLIENTS





# JOB REFERENCE

#	Client	Main Contractor / Project	Location	Scope of work	Value
1	SASREF	ATTS - Jubail Shutdown	Jubail	Concrete Repair, Cathodic Protection and Protective Coatings	41,650,000
2	Riyadh Metro	ANM	Riyadh	Epoxy Terrazzo , Traffic Coating & Anit-Slip Epoxy Flooring	16,800,000
3	Saudi Aramco	Saudi Petrofac	Jazan	Coating Works for Concrete Dike Wall, Foundations and Sleepers (Apcs-1E) - NTF	16,610,400
4	Saudi Aramco	Saudi Petrofac	Jazan	Internal Preservation for Crude Oil Tanks (7 Tanks) Using Fogging Technology from Cortec	8,793,750
5	Al Watania Poultry	Al Watania Poultry	Qassim	PU Screed for Cold Storage Flooring	6,540,000
6	Al-Kifah Contracting	Jazan Economic city project	Jazan	Epoxy Coating , Epoxy Self-levelling, Anti-static Flooring, Anti-Skid Flooring	6,000,000
7	Saudi Aramco	Saudi Petrofac	Jazan	Internal Preservation for Finished Products Tanks Using Fogging Technology from Cortec	6,000,000
8	Saudi Aramco	Saudi Petrofac	Jazan	Coating Works for Concrete Foundations and Sleepers (APCS-1E)	4,850,000
9	Saudi Aramco	Saudi Petrofac	Jazan	Coating Works for Concrete Dike Wall (APCS-1E) - STF	3,950,000
10	Al Hugayet Tower	Al Hugayet Group	Khobar	Anti-Carbonation coatings	3,600,000
11	Riyadh Metro	FAST	Riyadh	Epoxy Paint & flooring for Trains Stabling Area	3,000,000
12	SWCC	Temna Contracting	Shuaiba	Water Tank Lining	2,340,000
13	Shahini Group	Etmam Logistics Co.	Jeddah	PU Foam & High-Performance PU Screed	2,280,000
14	SAMA group	Absal Jean-Paul for contracting	Riyadh	Epoxy Terrazzo	2,000,000
15	Al Mana	Al Mana Hospital	Khobar	Epoxy Floor Coating & Self Levelling	1,920,000
16	Bin Dawood Group	Bin Dawood Markets (Danube)	Jeddah, Khobar, Riyadh	High-Performance PU Screed & Epoxy Self-levelling	1,850,000
17	Eastern Gate	Con Valley Est.	Dammam	Epoxy Floor Coating & Self-levelling	1,800,000
18	Arcon	Schlumberger Workshop	Dammam	Epoxy Floor Coating & Self-levelling	1,800,000
19	Al-Yammama	Jazan Economic city	Jazan	High Performance PU Screed Flooring	1,700,000
20	Al Fouzan Co.	Obstetrics Hospital - Ubhor	Jeddah	Epoxy Floor Coating, Self-levelling & Concrete Repair	1,650,000
21	Al Tayyar Plant	Al Tayyar For Plastics and Rubbers Co.	Jeddah	Waterproofing System	1,600,000
22	Al Babteen Factory	Gulf Builders Est.	Dammam	Epoxy Floor Coating, Self-levelling & Concrete Repair	1,500,000
23	SIDCO	SIDCO - Saudi Industrial Detergents	Dammam	Epoxy Floor Coating, Self-levelling & Concrete Repair	1,550,000
24	SEC	SEC- HQ	Riyadh	Multi Components Solvent-free PU Floor Coating	1,450,000
25	Saudi Aramco – SOMITOMO	Saudi Petrofac	Rabigh	External Waterproofing System Around the Perimeter of 50 Tanks - 2 mm Polyurea	1,400,000
26	Shuqaiq – Jizan	Al Fanar Construction Co.	Jazan	PU Spray Foam & Epoxy Self-levelling	1,380,000
27	Baltyoar Tower	Asmael	Khobar	Epoxy Floor Coating & Anti Carbonation System	1,370,000
28	Al Hokair Group	Qurtoba Mall	Riyadh	Epoxy Floor Coating	1,296,000
29	MODON	Suido Kiko Middle East Co	Dammam	Protective Coating	1,272,000
30	Ministry of Housing	Ghonaim International Co.	Jeddah	Epoxy Coating	1,224,000
31	BuildingTech Co.	Prince Abdullah Al-Faisal Stadium	Jeddah	Epoxy Floor Coating , Epoxy Self-levelling & Fireproofing	1,210,000
32	GACA	WADI AL BINAA CO.	Dammam	Epoxy Terrazzo	1,200,000
33	Tamer Group	Dammam Warehouse	Dammam	High Performance PU Screed Flooring	1,200,000
34	SWCC - Khobar	SAS - Sewage treatment plant	Khobar	Protective Coating	1,200,000
35	SWCC- Jubail	Al-Kawther	Jubail	Protective Coating	1,100,000
36	Aquat - AlBaik	Food freezers Jeddah factory	Jeddah	High Performance PU Screed Flooring	1,032,000
37	Al-Othaim	Al-Othaim Markets	Riyadh	PU Spray Foam	1,020,000
38	Al Bargash Tower	Asmael	Khobar	Epoxy Floor Coating & Anti Carbonation System	1,020,000
39	Eurostar Factory	Al Majed Al Khaled - Est.	Dammam	Epoxy Floor Coating & Self-levelling	1,020,000
40	Al Motalq Tower	Asmael	Khobar	Epoxy Floor Coating & Anti Carbonation System	1,008,000

#	Client	Main Contractor / Project	Location	Scope of work	Value
41	Rak AlEamar	Mashareq Food factory	Makkah	Epoxy Floor Coating , Epoxy Self-levelling	996,000
42	Extra Warehouse	Gulf Builders Est	Dammam	Epoxy Floor Coating & Self Levelling & Concrete Repair	960,000
43	Ada-Riyadh Bus	Mobco	Riyadh	Epoxy Lining for Water Tanks and Workshop Flooring	960,000
44	Azmeel Co.	Marafiq Headquarter	Jubail	Epoxy Floor Coating	960,000
45	Asia Steel Factory	Al Majed Al Khaled - Est.	Jubail	Epoxy Floor Coating & Self-levelling	912,000
46	Aquat - AlBaik	Water Tank & Condenser - Jeddah factory	Jeddah	PVC Waterproofing	804,000
47	Riyadh Metro	CWG-ANM	Riyadh	Epoxy Flooring Paint for UG Stations 3F2, 3E3 and 3E4	750,000
48	Panda	Panda Markets	Riyadh	PU Spray Foam	720,000
49	Rawabi	NCC Substation	Khobar	Epoxy Floor Coating, Self-levelling & Concrete Repair	720,000
50	Rezayat Group	Dhahran Substation	Jubail	Epoxy Floor Coating & Self-levelling	660,000
51	Jazan Gas	Jazan Gas Project	Jazan	High Performance PU Screed Flooring	612,000
52	Saudi Filter	Saudi Filter Factory	Dammam	Epoxy Floor Coating & Self-levelling	600,000
53	Al Wataniya	Al Wataniya	Riyadh	High Performance PU Screed Flooring	588,000
54	Al-Mohamadiah	Al-Mohamadiah	Dammam	PU Spray Foam	540,000
55	Nada Factory	Gulf Builders Est.	Al Hassa	Epoxy Floor Coating & Self-levelling & Concrete Repair	540,000
56	EEIC Factory	Con Valley Est.	Dammam	Epoxy Floor Coating & Self-levelling	540,000
57	Faqih Group	Faqih Hospital	Riyadh	Fire Proofing (Intumescent paint)	488,400
58	Ministry of Health	Speciality Hospital	Riyadh	Epoxy Floor Coating	434,400
59	Dara Medical Group	Aldara Hospital	Riyadh	Concrete Repair/ Polyurea Waterproofing/ Epoxy Floor Coating	432,000
60	Kano Factory	Gulf Builders Est.	Jubail	Epoxy Floor Coating , Epoxy Self-levelling, Concrete Repair	420,000
61	Toray Factory	Gulf Builders Est.	Dammam	Epoxy Floor Coating	384,000
62	Erad Tower	Con Valley Est.	Khobar	Epoxy Floor Coating	384,000
63	SITCO Factory	Con Valley Est.	Dammam	Epoxy Floor Coating & Self-levelling	360,000
64	IHCC	Advance Pharma factory	Jeddah	Epoxy Self-levelling	354,000
65	Saudi Amana	APEX Pharma factory	Jeddah	Epoxy Self-levelling	342,000
66	Aramco	Service Building	Dhahran	Epoxy Terrazzo	318,000
67	Al Nahdi	Jeddah warehouse	Jeddah	Epoxy Self-levelling	315,600
68	Alfa Co.	Piatto, FireGrill, ETC resturants	Jeddah	High Performance PU Screed Flooring	312,000
69	Saudi Amana	Red Sea Project	Umluj	Epoxy Floor Coating , Epoxy Self-levelling	294,000
70	Ghonaim International Co.	AlHajrain Village expansion	Jeddah	Epoxy Floor Coating	278,400
71	Mefsc	Mefsc	Kharij	Concrete Repair/Polysulphide Tank Paints	262,500
72	Sama	ABSAL PAUL	Riyadh	Epoxy Terrazzo Flooring	240,000
73	EGZA Factory	Gulf Builders Est.	Dammam	Epoxy Floor Coating & Self-levelling	216,000
74	Al Shaye Group	Cheesecake Factory Restaurant - Riyad Park	Riyadh	High Performance PU Screed Flooring	213,000
75	El Banawy Factory	Gulf Builders Est.	Dammam	Epoxy Floor Coating, Self-levelling & Concrete Repair	192,000
76	Al Safi Dannone	Jeddah Branch	Jeddah	Epoxy Self-levelling	186,000
77	Manifa Factory	Gulf Builders Est.	Dammam	Epoxy Floor Coating	144,000
78	Al Marai	Al Marai	Saudi Amana	High Performance PU Screed Flooring	118,140
79	Savola	Al Safi Factory	Riyadh	Polyurea Waterproofing	97,200
80	Ministry of Transport	Riyadh Metro Depot	Riyadh	Cementitious Waterproofing	81,600
81	Al Shaye Group	PF Chang's Restaurant – Riyadh Park	Riyadh	High Performance PU Screed Flooring	79,200
82	Ministry of Defence	Military College	Riyadh	Anti-Static Flooring	45,600
83	Al Jomaih	Al Jomaih - Pepsico Factory	Riyadh	Decorative Epoxy Flooring	43,860



# CONTACT US



## HEAD OFFICE (EASTERN REGION)

Prince Turki - Al Yarmouk disct.  
P.O. Box 2225 Al Khobar 31952  
Saudi Arabia

Tel: +966 13 869 3100



## CENTRAL REGION OFFICE

Al Wadi Disct. - Exit 6  
Northern Ring Road  
Riyadh 13313

Tel: +966 11 236 9300



## WESTERN REGION OFFICE

Al-Madinah Al-Munawarah Rd.  
Al Faisaliyyah disct.  
Jeddah 23442

Tel: +966 12 227 3100



[www.sa-conex.com](http://www.sa-conex.com)

[info@sa-conex.com](mailto:info@sa-conex.com)

**CONSTRUCTION EXCELLENCE GENERAL CONTRACTING CO.**

CR 2051023332

VAT 310790889400003

Please contact your nearest regional office for updated certificates and legal documents.







*CONSTRUCTION EXCELLENCE GENERAL CONTRACTING CO.*

*P.O. Box No. 2225, Al Khobar 31952  
Kingdom of Saudi Arabia  
Telefax: +966 13 869 0111*